



e-Application notes

Tasimelteon

CHROMATOGRAPHIC CONDITIONS

Column: CHIRALPAK® IG-3 [4.6 x 250 mm, 3 μm]

Part No: 87525

Mobile phase: n-Hexane : Ethanol : Methanol : DEA

(90/5/5/0.1, v/v/v/v)

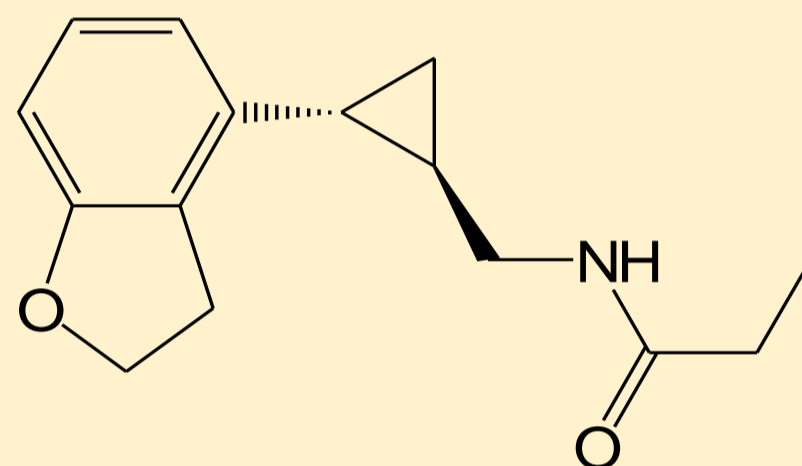
Flowrate: 1.0 mL/min

Column Oven Temperature: 25 °C

UV Detection: 280 nm

Sample Concentration: 1.0 mg/mL

Diluent: Ethanol



CHROMATOGRAPHIC CHARACTERISTICS

tR ₁ : 9.9	N ₁ : 10392	T ₁ : 1.2	
tR ₂ : 10.8	N ₂ : 8966	T ₂ : 1.3	Rs: 2.2

