

## Hesperidin

### CHROMATOGRAPHIC CONDITIONS

Column: CHIRALPAK® IE [4.6 x 250 mm, 5 µm]

Part No: 85325

Mobile phase: MTBE : Methanol (85/15,v/v)

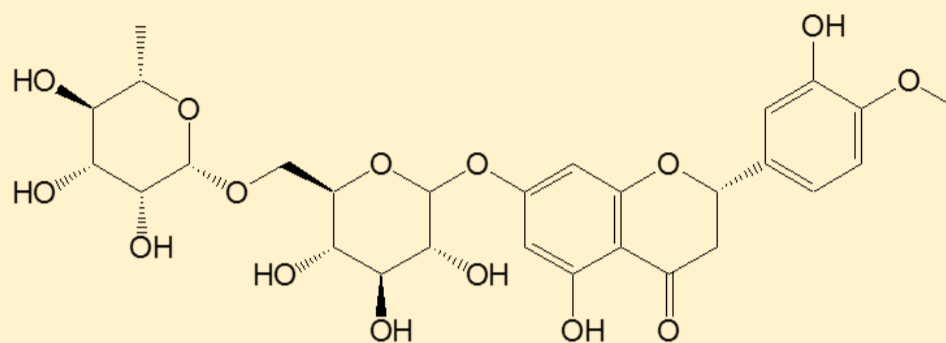
Flowrate: 1.0 mL/min

Column Oven Temperature: 40 °C

UV Detection: 280 nm

Diluent: Add 40 µL of TFA and then add 300 µL of Methanol and 700µL of MTBE. (In situ sample preparation)

Sample Concentration: 2.0 mg/mL



### SEPARATION PERFORMANCE

$t_{R1}$ : 6.8	$N_1$ : 4669	$T_1$ : 1.8	
$t_{R2}$ : 8.7	$N_2$ : 3167	$T_2$ : 2.1	$R_s$ : 3.9

