

Ibrutinib

CHROMATOGRAPHIC CONDITIONS

Column: CHIRALPAK® IG [4.6 x 250 mm, 5 µm]

Part No: 87325

Mobile phase: Methanol:ACN:EDA (50/50/0.3, v/v/v)

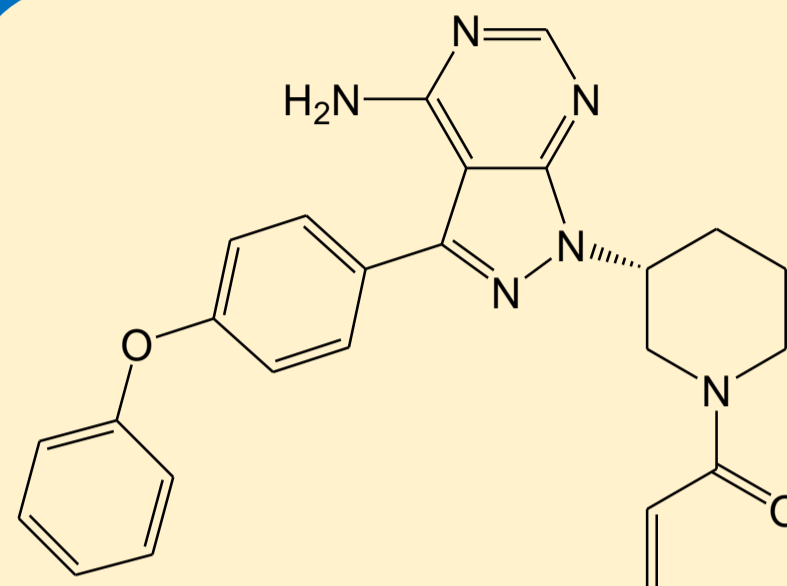
Flowrate: 1.0 mL/min

Column Oven Temperature: 40 °C

UV detection: 258 nm

Diluent: Mobile phase

Concentration: 1.0 mg/mL.



SEPARATION PERFORMANCE

t_{R1} : 6.22	N_1 : 11700	T_1 : 1.1	
t_{R2} : 10.4	N_2 : 5350	T_2 : 1.2	R_s : 10.4

