

## Linagliptin

### CHROMATOGRAPHIC CONDITIONS

Column: CROWNPAK®CR-I (+) [3.0 x 150 mm, 5 µm]  
Part No: 53784

Mobile phase: aq. Perchloric acid (pH=1.0):ACN (70/30,v/v)

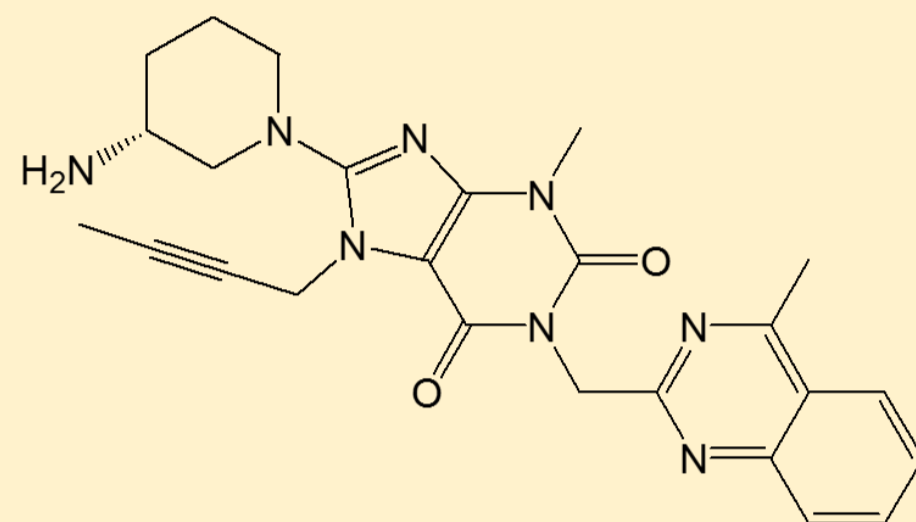
Flowrate: 0.5 mL/min

Column Oven Temperature: 10 °C

UV Detection: 295 nm

Diluent: Mobile phase

Sample Concentration: 1.0 mg/mL



### SEPARATION PERFORMANCE

$tR_1$ : 16.0	$N_1$ : 3131	$T_1$ : 1.3	
$tR_2$ : 18.4	$N_2$ : 2972	$T_2$ : 1.3	$R_s$ : 1.94

