

Silodosin

CHROMATOGRAPHIC CONDITIONS

Column: CHIRALPAK® IF-3 [4.6 x 250 mm, 3 µm]

Part No: 86525

Mobile phase: MtBE : Ethanol : DEA (90/10/0.1, v/v/v)

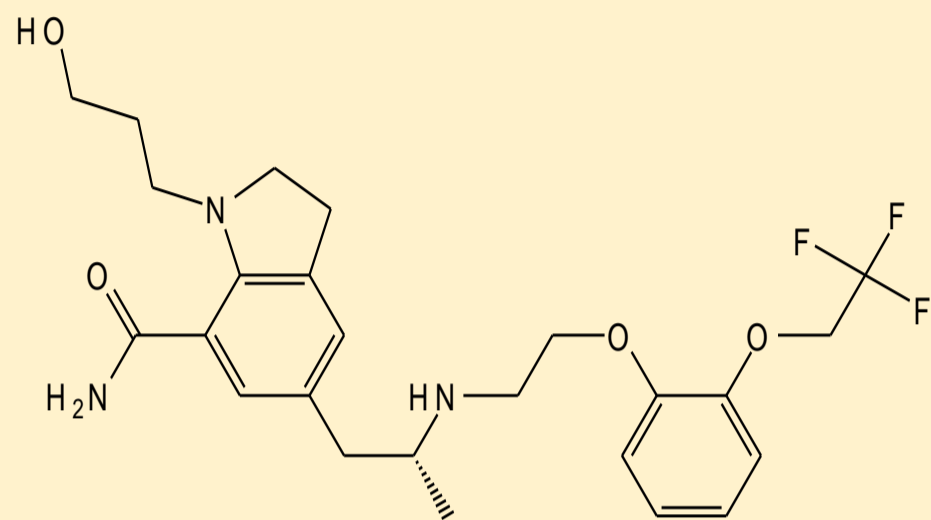
Flowrate: 1.0 mL/min

Column Oven Temperature: 25 °C

UV Detection: 270 nm

Diluent: Mobile phase

Sample Concentration: 1.0 mg/mL



SEPARATION PERFORMANCE

t_{R1} : 7.7	N_1 : 9158	T_1 : 1.6	
t_{R2} : 9.0	N_2 : 9230	T_2 : 1.5	R_s : 3.9

