

Solifenacin

CHROMATOGRAPHIC CONDITIONS

Column: CHIRALPAK® IC-3 [4.6 x 250 mm, 3 µm]

Part No: 83525

Mobile phase: n-Hexane : Ethanol : 2-propanol : DEA
(60/15/25/0.1, v/v/v/v)

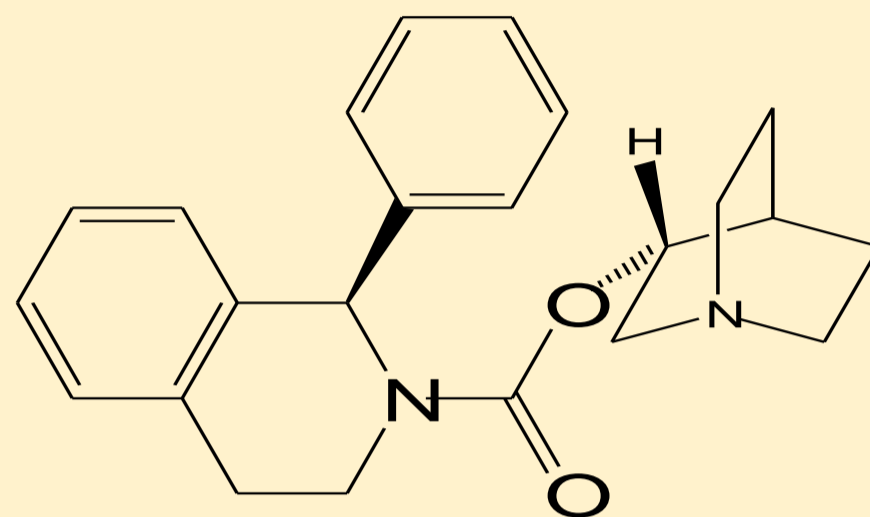
Flowrate: 1.0 mL/min

Column Oven Temperature: 30 °C

UV Detection: 220 nm

Diluent: Mobile phase

Sample Concentration: 1.0 mg/mL



SEPARATION PERFORMANCE

tR ₁ : 8.7	N ₁ : 7391	T ₁ : 1.6	
tR ₂ : 10.3	N ₂ : 7359	T ₂ : 1.5	Rs: 3.5
tR ₃ : 13.0	N ₃ : 7647	T ₃ : 1.3	Rs: 5.1
tR ₄ : 17.1	N ₄ : 7613	T ₄ : 1.2	Rs: 6.0

