

Simple Concentration and Analysis of Flavor Components in Blueberry Jam - Using Sorptive Media MonoTrap

MonoTrap RCC18 (with activated carbon) was used to collect fragrance components using a headspace method (HS). Headspace methods (HS) are effective for collection of compounds from highly viscous and high matrix samples such as jams.

Preliminary processing procedure

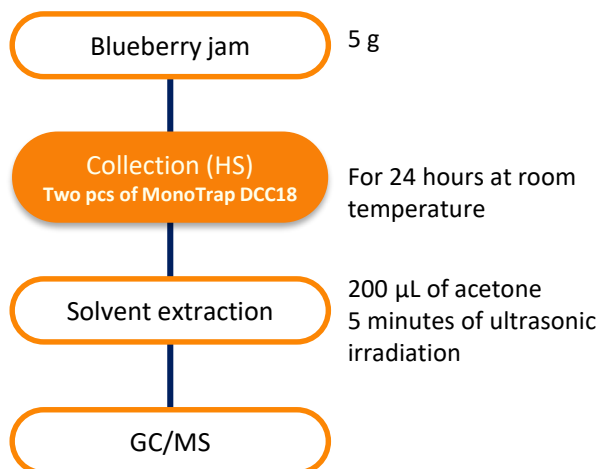


Image of collection vial

GC Conditions

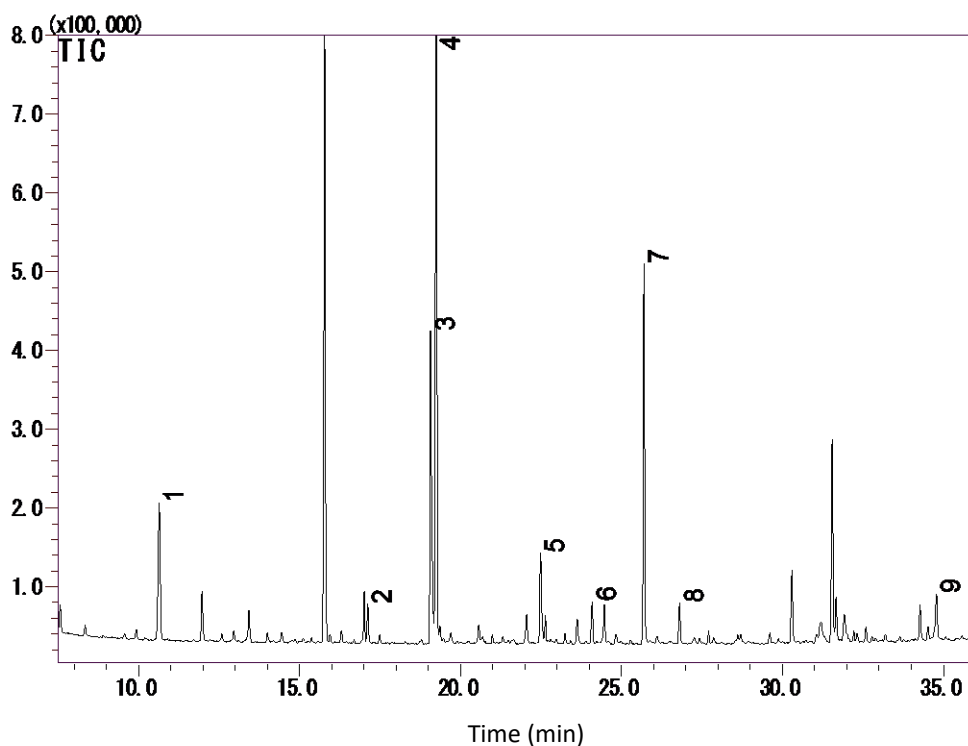
System : GC - MS
Column : InertCap Pure-WAX 0.25 mm I.D. x 30 m
 df = 0.25 µm
Col. Temp. : 40 °C (5 min) - 4 °C/min - 250 °C
Carrier Gas : He 120 kPa
Injection : Splitless
 250 °C
Detection : MS Scan (m/z : 40-350)
Sample Size: 1 µL

Initial use of MonoTrap...

Introduction to the convenient MonoTrap Start UP-KIT

	Description	Qty.
①	MT Holder	5
②	MT Stand	1
③	MT Extract Cup with Vial (20 mL)	5
④	Clean Pin Hole Septum with vial (40 mL)	5
⑤	200 µL glass insert (flat bottom)	40
⑥	MonoTrap DCC18	20
⑦	MonoTrap RCC18	20
⑧	MonoTrap DSC18	20
⑨	MonoTrap RSC18	20





- | | |
|----------------------|------------------------|
| 1. Isoamyl formate | 6. Ethyl laevulinate |
| 2. Nonanal | 7. 2-Furanmethanol |
| 3. Acetic acid | 8. α -Terpineol |
| 4. Furfural | 9. Furyl hydroxymethyl |
| 5. β -Linalool | |

* According to library search results

GL Sciences disclaims any and all responsibility for any injury or damage which may be caused by this data directly or indirectly. We reserve the right to amend this information or data at any time and without any prior announcement.

GL Sciences, Inc. Japan

22-1 Nishishinjuku 6-Chome
Shinjuku-ku, Tokyo,
163-1130, Japan
Phone: +81-3-5323-6620
Fax: +81-3-5323-6621
Email: world@glsc.co.jp
Web: www.glsciences.com

GL Sciences B.V.

De Sleutel 9
5652 AS Eindhoven
The Netherlands
Phone: +31 (0)40 254 95 31
Email: info@glsciences.eu
Web: www.glsciences.eu

GL Sciences, Inc. USA

4733 Torrance Blvd. Suite 255
Torrance, CA 90503
Phone: 310-265-4424
Fax: 310-265-4425
Email: info@glsciencesinc.com
Web: www.glsciencesinc.com

GL Sciences (ShangHai) Ltd.

Tower B, Room 2003,
Far East International Plaza,
NO,317 Xianxia Road,
Changning District.
Shanghai, China P.C. 200032
Phone: +86 (0)21-6278-2272
Email: contact@glsciences.com.cn
Web: www.glsciences.com.cn

International Distributors

Visit our Website at www.glsciences.com/distributors