

Concentration Analysis of Chocolate Flavor Components - Using MonoTrap Simple Enrichment Tools

MonoTrap RGC18TD, a simple enrichment tool was used to screen the flavor components in chocolate. MonoTrap RGC18TD is a dedicated heat-desorption cartridge, it is individually packaged in ampoules and does not require conditioning before use.

Pretreatment procedure

Chocolate

In a single size
place in 40 mL vials

GC Conditions

System : GC - MS - Thermal Desorption
Column : InertCap 5MS/NP
0.25 mm I.D. x 30 m, df = 0.25 μ m
Col.Temp. : 40 °C (5 min) - 4 °C/min - 250 °C
Carrier Gas : He, 1 mL/min (constant flow)

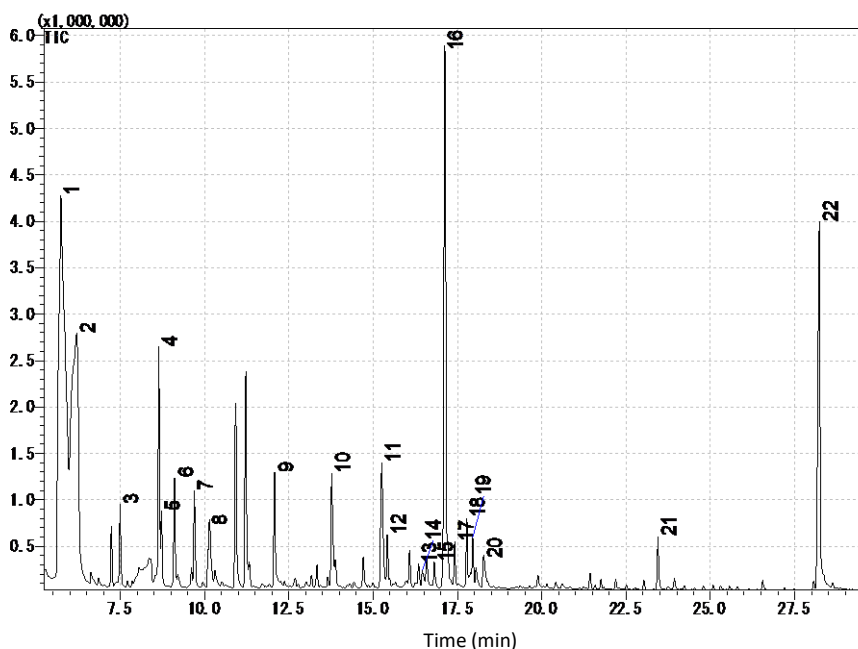
Collection (HS)

One MonoTrap RGC18TD

At 60 °C for 15
minutes

Desorb Temp. : 200 °C
Time : 5 min
Mode : Split (Split ratio 5:1)
Cryo Trapping : -150 °C
Injection Temp. : 200 °C
Detection : MS Scan (m/z : 29-600)

TD/GC/MS



- | | |
|------------------------|----------------------------|
| 1. Butanediol | 12. Methylheptyl acetate |
| 2. Butanediol | 13. Acetophenone |
| 3. Methylbutyl acetate | 14. Acetylpyrrole |
| 4. Isoamyl acetate | 15. Ethyl dimethylpyrazine |
| 5. Methylbutyl acetate | 16. Tetramethylpyrazine |
| 6. Heptanon | 17. Nonanon |
| 7. Heptanol | 18. Linalool |
| 8. Dimethyl pyrazine | 19. Nonanal |
| 9. Benzaldehyde | 20. Phenylethyl alcohol |
| 10. Trimethylpyrazine | 21. Phenethyl acetate |
| 11. Benzyl Alcohol | 22. Vanillin |

※According to library search results

Products

Absorbent

Description : MonoTrap RGC18TD
Cat.No. : 1050-74201

* Shipped in ample tube.



MonoTrap RGC18TD



MonoTrap Trial Kit for TD

| Contents | Cat.No. |
|---|------------|
| <ul style="list-style-type: none"> ● MonoTrap TD 10 pcs (Select one from 3 types as below) MonoTrap RSC18 TD, RGC18 TD, RGPS TD ● Glass Tube 1 pc (Select a tube for OPTIC / LINE, or for T-Dex / ATD / TD-20) ● MT Holder 1 pc ● CLEAN PIN HOLE SEPTUM WITH VIAL 1 pc | 1050-07800 |

GC Capillary Columns

Description : InertCap 5MS/NP
Size : 0.25 mm I.D. x 30 m, df = 0.25 μ m
Cat.No. : 1010-18642



InertCap 5MS/NP

GL Sciences disclaims any and all responsibility for any injury or damage which may be caused by this data directly or indirectly. We reserve the right to amend this information or data at any time and without any prior announcement.

GL Sciences, Inc. Japan

22-1 Nishishinjuku 6-Chome
Shinjuku-ku, Tokyo,
163-1130, Japan
Phone: +81-3-5323-6620
Fax: +81-3-5323-6621
Email: world@glsciences.co.jp
Web: www.glsciences.com

GL Sciences B.V.

De Sleutel 9
5652 AS Eindhoven
The Netherlands
Phone: +31 (0)40 254 95 31
Email: info@glsciences.eu
Web: www.glsciences.eu

GL Sciences, Inc. USA

4733 Torrance Blvd. Suite 255
Torrance, CA 90503
Phone: 310-265-4424
Fax: 310-265-4425
Email: info@glsciencesinc.com
Web: www.glsciencesinc.com

GL Sciences (ShangHai) Ltd.

Tower B, Room 2003,
Far East International Plaza,
NO,317 Xianxia Road,
Changning District.
Shanghai, China P.C. 200032
Phone: +86 (0)21-6278-2272
Email: contact@glsciences.com.cn
Web: www.glsciences.com.cn

International Distributors

Visit our Website at www.glsciences.com/distributors