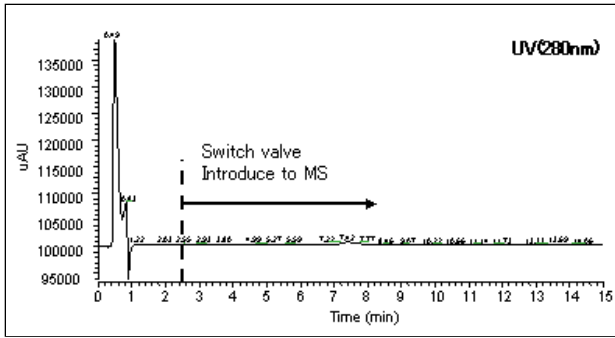
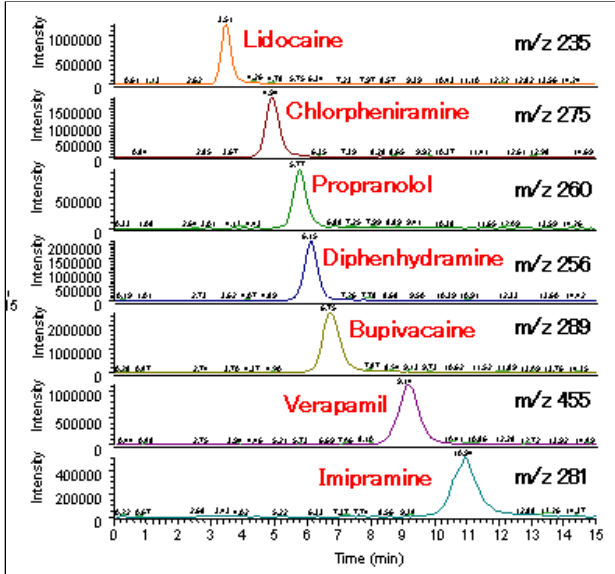


LC/MS Analysis of Drugs in BSA (1) (ODP2 HP)

LC/MS analysis of drugs in BSA was performed using polymer-based column ODP2 HP. Each drug has peak areas between 83-100 % (peak areas without BSA are set as 100 %), which means a good separation without receiving ion suppression from protein.



Sample : drugs 500ng/mL each in BSA  
 (7.0mg/L), 5 μ L  
 Lidocaine  
 Chlorpheniramine  
 Propranolol  
 Diphenhydramine  
 Bupivacaine  
 Verapamil  
 Imipramine



Column : Shodex ODP2 HP-2B (2.0mmI.D. x 50mm)  
 Eluent : 10mM Ammonium acetate aq./CH<sub>3</sub>CN=70/30  
 Flow rate : 0.2mL/min  
 Detector : UV(280nm), ESI-MS (SIM Positive)  
 Column temp. : 40°C