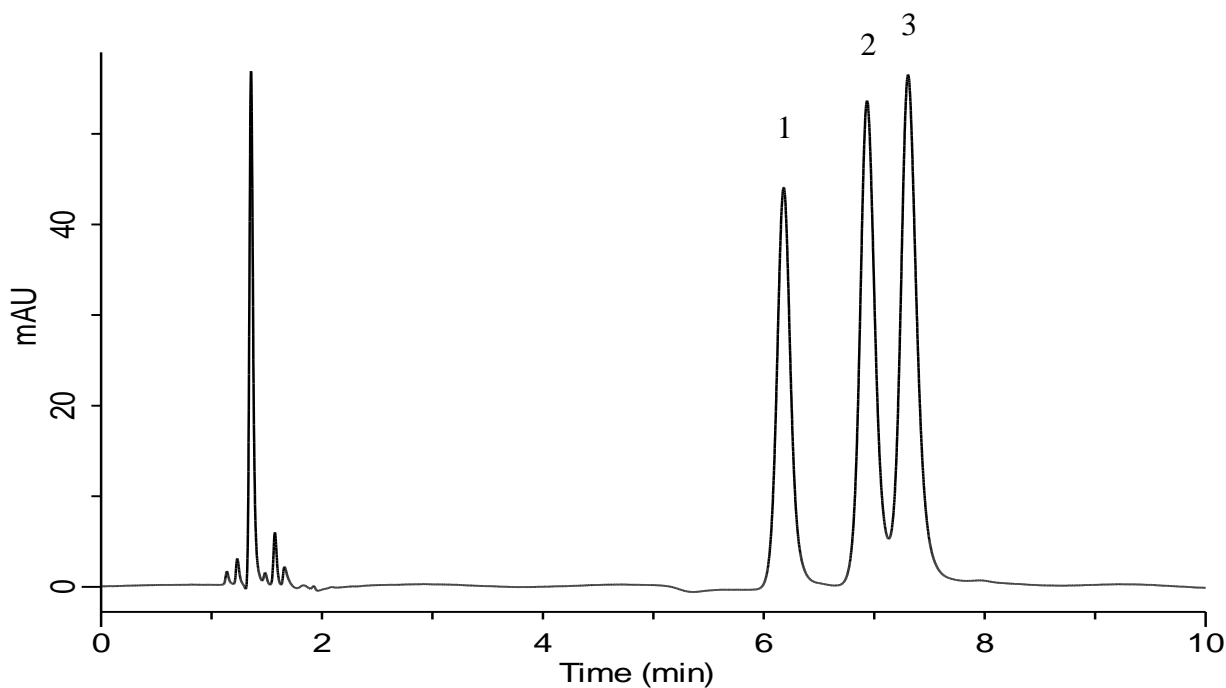


InertSearch for LC

Inertsil Applications

Analysis of Methylhippuric acids

Data No. LB644-0806



Conditions

Column : InertSustain Amide
(1.9 μ m, 150 x 2.1 mm I.D.)

Column Cat. No. : 5020-88819

Eluent : A) CH₃CN
B) 10 mM HCOONH₄ + 0.1% HCOOH in H₂O
A/B = 95/5, v/v

Flow rate : 0.3 mL/min

Col. Temp. : 40 °C

Detection : UV 225 nm

Injection Vol. : 0.5 μ L

Sample : Standard

Analyte:

1. <i>o</i> -Methylhippuric acid	500 mg/L
2. <i>m</i> -Methylhippuric acid	500 mg/L
3. <i>p</i> -Methylhippuric acid	500 mg/L