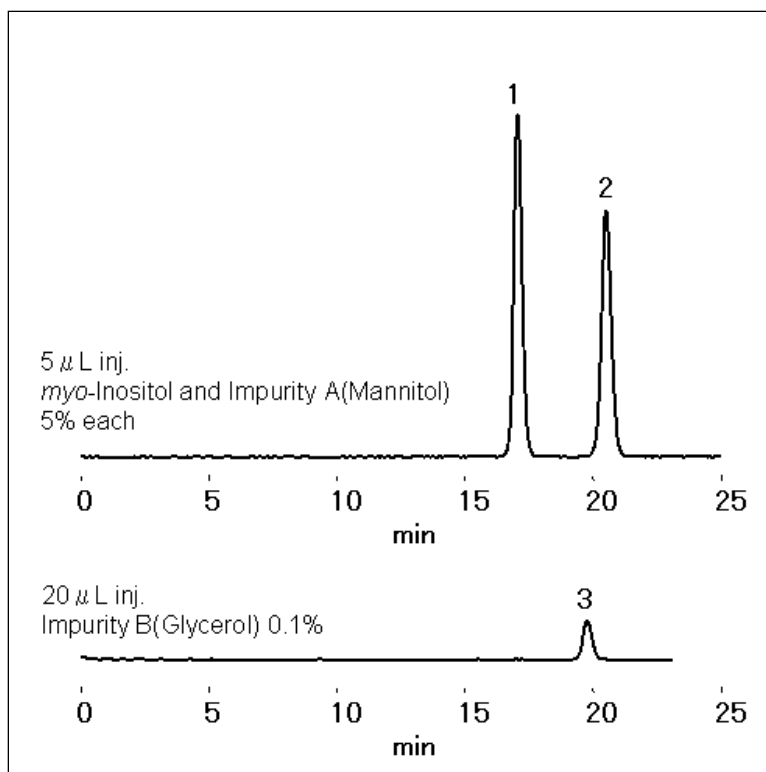


### Analysis of *myo*-Inositol According to EP Method (SC1011-7F)

According to EP method (Reference No. 1805, Version Date 01/2008), mannitol should be analyzed using a column which can separate *myo*-Inositol and mannitol (impurity A) with resolution of equal to or greater than 4.0. EP SC1011-7F is a column specially designed for *myo*-Inositol analysis, which satisfies this criterion.



Column : Shodex EP SC1011-7F (7.8mmI.D. x 300mm)  
Eluent : H<sub>2</sub>O  
Flow rate : 0.5mL/min  
Detector : Shodex RI  
Column temp. : 85°C