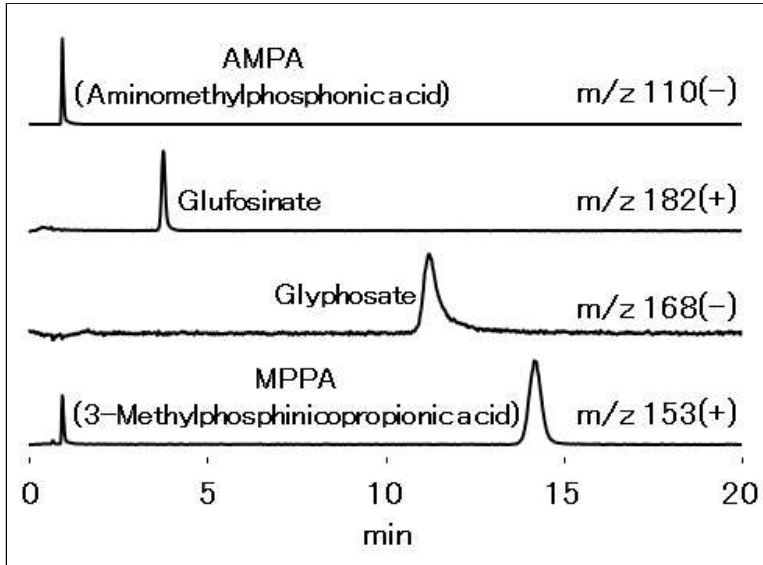


LC/MS Analysis of Glyphosate and Glufosinate (VT-50 2D)

VT-50 2D was used for LC/MS analysis of phosphorus-containing amino acid herbicides: glyphosate, glufosinate and their metabolites.



Column : Shodex HILICpak VT-50 2D (2.0mmI.D. x 150mm)
Eluent : H₂O/1% HCOOH aq./CH₃CN=70/20/10
Flow rate : 0.3mL/min
Detector : ESI-MS (SIM)
Column temp. : 40°C