

Analysis of Sulfite in Disposable Wooden Chopsticks (SI-35 4D)

Please use this column with suppressor type ion chromatography system.

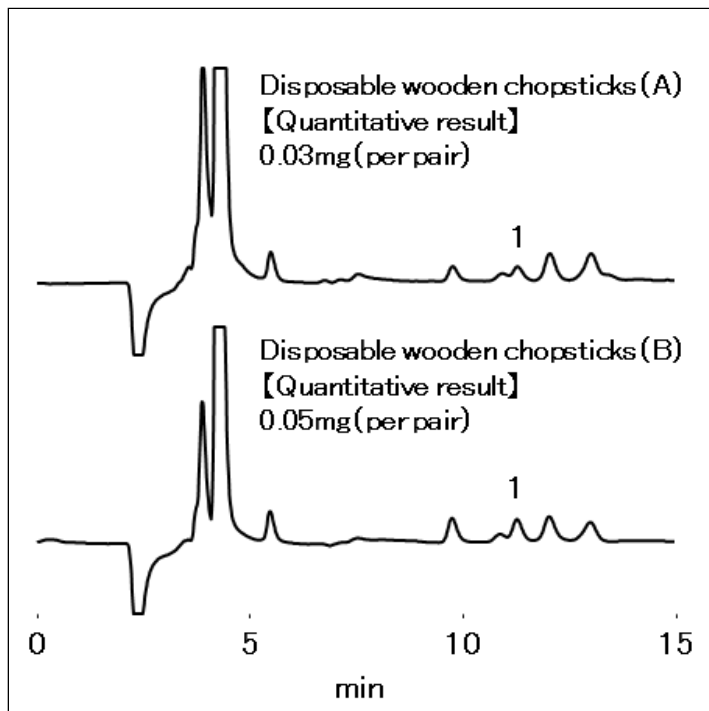
The concentration of sulfur dioxide or sulfite in a pair of disposable wooden chopsticks was decided ≥ 4 mg (sulfur dioxide equivalent) in Shoku-An No.1113001 (November 13, 2007) of Department of Food Safety, Pharmaceutical and Food Safety Bureau, MHLW. After preparing disposable wooden chopsticks according to the official method, sulfite was analyzed using a column for anions analysis, IC SI-35 4D.

Preparation of Sample

Pour 25 mL of water into the stoppered test tube (25 mL) and warm it to 95° C.

Cut one disposable wooden chopstick into two pieces, soak the pieces in heated water (95° C) for 30 minutes, and then remove from the solution.

After the solution cooled down, dilute 5 mL of the cooled solution with 20 mL of water and filter using a 0.45 μ m membrane filter before injection.



Column : Shodex IC SI-35 4D (4.0mm I.D. x 150mm)
Eluent : 3.2mM Na₂CO₃ + 1.9mM NaHCO₃ aq.
Flow rate : 0.6mL/min
Detector : Suppressed conductivity
Column temp. : 40°C