

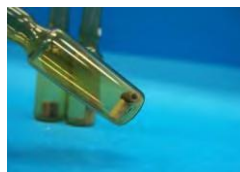
Easy Concentration & Analysis of Shaoxing Rice Wine Aroma Compounds by MonoTrap TD – Thermal Desorption

MonoTrap TD RGC18TD (graphite carbon contained) for Thermal Desorption. No need for conditioning before use.

Protocol

Shaoxing rice wine

Pour 30 mL of rice wine into a 40 mL vial



RGC18TD

HeadSpace Sampling
MonoTrap RGC18TD × 1pcs

3 hours at room temperature

TD/GC/MS

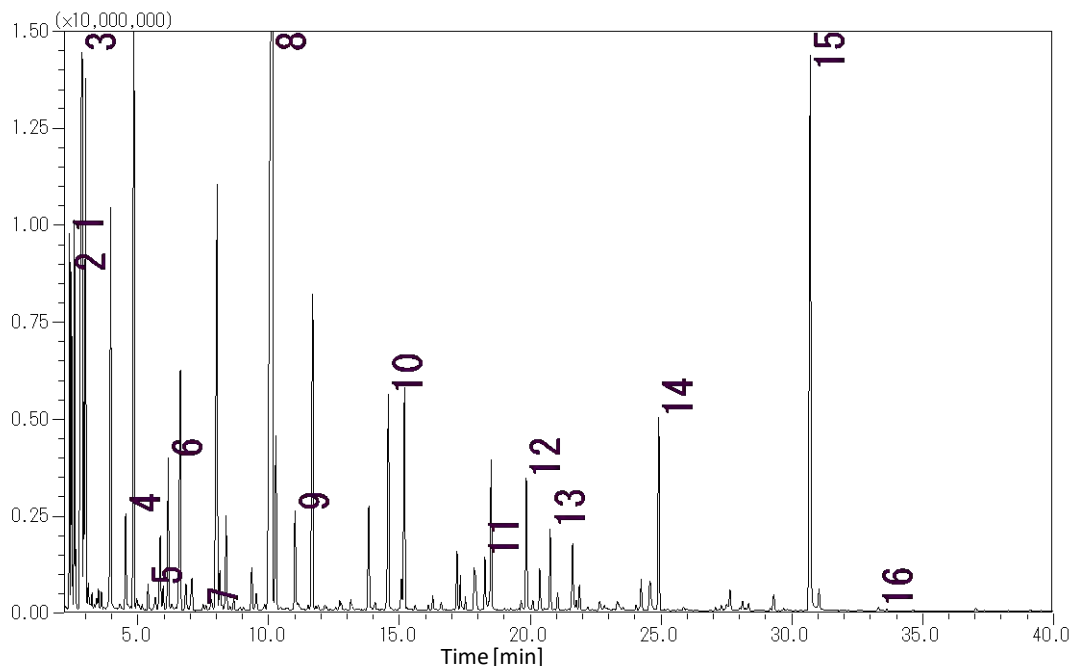


Clean Pin Hole
Septum With vial
MT Holder

Head Space Sampling Image

GC Conditions

System	: GC/MS-Thermal Desorption (T-Dex II)
Column	: InertCap Pure-WAX 0.25 mm I.D. × 30 m, df = 0.25 μm
Col.Temp.	: 40 °C (5 min) - 4 °C/min - 250 °C
Carrier Gas	: He 1 mL/min (constant flow)
Desorb Temp.	: 200 °C
Time	: 5 min
Flow	: 2 mL/min
Split	: Splitless
Cryo Trapping	: -160 °C
Injection Temp.	: 250 °C
Detection	: MS Scan (<i>m/z</i> 40 - 600)



- | | |
|-----------------------------|--|
| 1. Ethyl acetate | 9. Ethyl hexanoate |
| 2. Ethylidene diethyl ether | 10. Ethyllactate |
| 3. Ethyl alcohol | 11. Furfural |
| 4. Ethyl butanoate | 12. Benzaldehyde |
| 5. Ethyl 3-methylbutanoate | 13. 2,3-Butanediol |
| 6. Isobutyl alcohol | 14. Ethyl succinate |
| 7. Ethyl pentanoate | 15. Phenylethyl alcohol |
| 8. Isopentyl alcohol | 16. γ - <i>n</i> -Amylbutyrolactone |

MonoTrap series products lineup



RGC18TD



RSC18TD

GL Sciences disclaims any and all responsibility for any injury or damage which may be caused by this data directly or indirectly. We reserve the right to amend this information or data at any time and without any prior announcement.

GL Sciences, Inc. Japan

22-1 Nishishinjuku 6-Chome
Shinjuku-ku, Tokyo,
163-1130, Japan
Phone: +81-3-5323-6620
Fax: +81-3-5323-6621
Email: world@gls.co.jp
Web: www.glsciences.com

GL Sciences B.V.

De Sleutel 9
5652 AS Eindhoven
The Netherlands
Phone: +31 (0)40 254 95 31
Email: info@glscienc.es
Web: www.glsciences.eu

GL Sciences (ShangHai) Ltd.

Tower B, Room 2003,
Far East International Plaza,
NO,317 Xianxia Road,
Changning District.
Shanghai, China P.C. 200032
Phone: +86 (0)21-6278-2272
Email: contact@glscienc.es.com.cn
Web: www.glsciences.com.cn

GL Sciences, Inc. USA

4733 Torrance Blvd. Suite 255
Torrance, CA 90503
Phone: 310-265-4424
Fax: 310-265-4425
Email: info@glscienc.esinc.com
Web: www.glsciencesinc.com

International Distributors

Visit our Website at:
<https://www.glsciences.com/company/distributor.html>