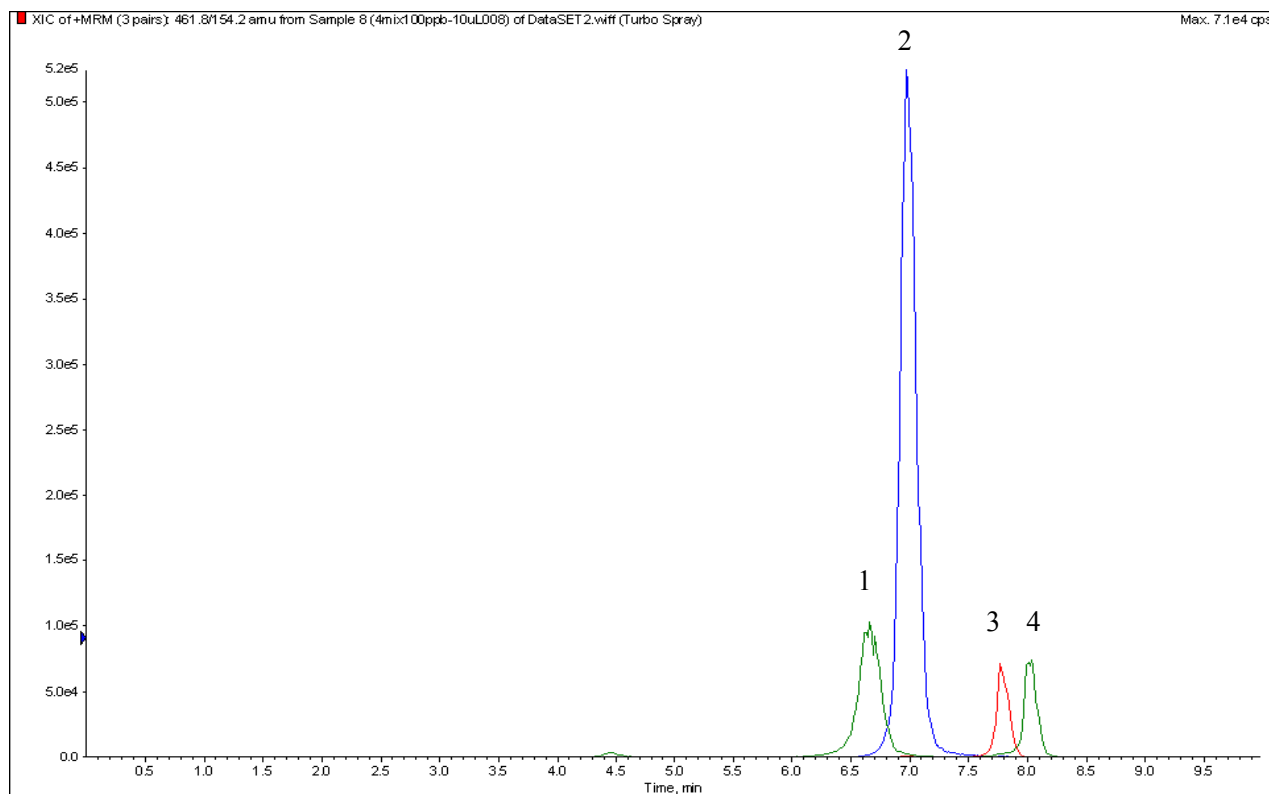


# InertSearch™ for LC

Inertsil® Applications

## Analysis of Tetracyclines

Data No. LA687-0811



### Conditions

**System** : LC800 HPLC system  
4000 Q TRAP®

**Column** : Inertsil ODS-4 (3 µm, 75 x 2.1 mm I.D.)

**Column Cat. No.** : 5020-03913

**Eluent** : A) 0.1 % HCOOH in CH<sub>3</sub>OH  
B) 0.1 % HCOOH in H<sub>2</sub>O  
A/B = 20/80 – 4.5 min – 20/80 – 2 min – 95/5 – 3.5 min – 95/5, v/v

**Flow Rate** : 0.2 mL/min

**Col. Temp.** : 40 °C

**Detection** : LC/MS/MS (ESI, Positive, MRM)

**Injection Vol.** : 10 µL

### Analyte

1. Tetracycline (TC)	(100 µg/L)	Q1: 445.1	Q3: 154.0
2. Oxytetracycline (OTC)	(100 µg/L)	Q1: 460.9	Q3: 426.2
3. Chlortetracycline (CTC)	(100 µg/L)	Q1: 461.8	Q3: 154.2
4. Doxycycline (DC)	(100 µg/L)	Q1: 444.9	Q3: 427.9