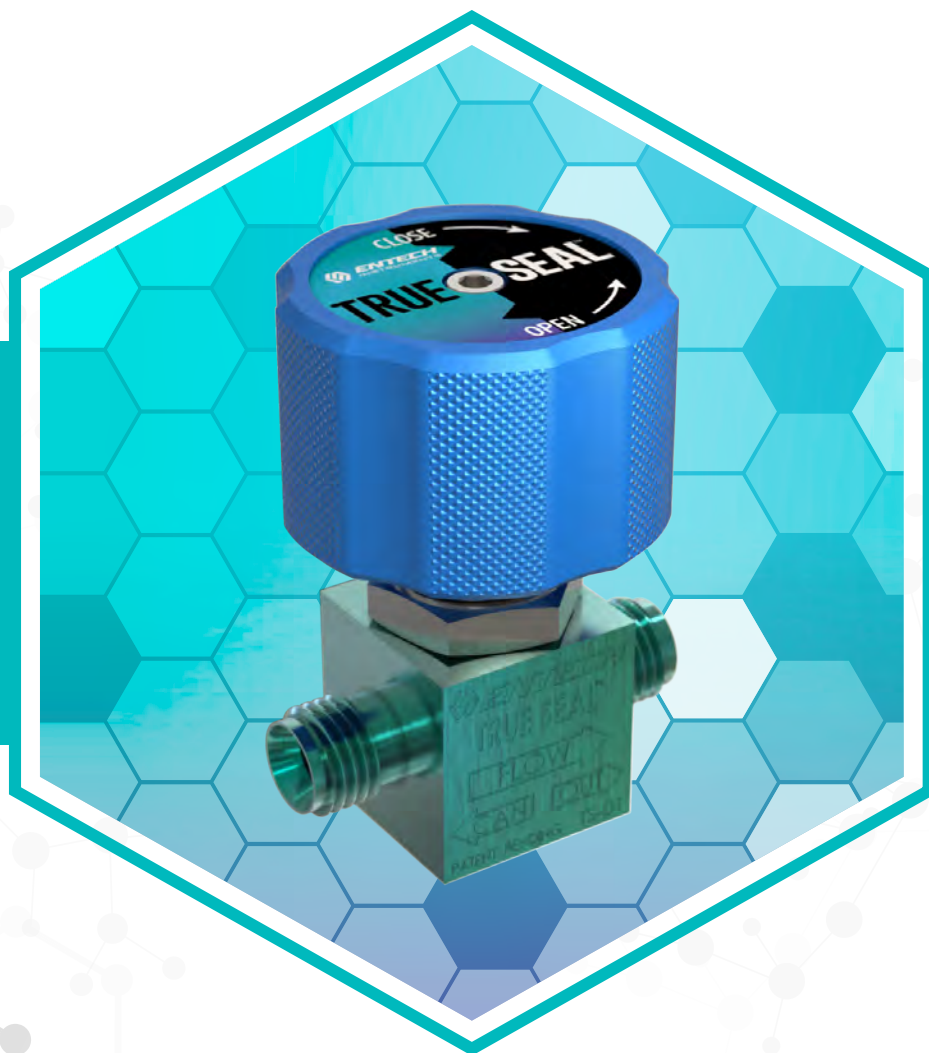




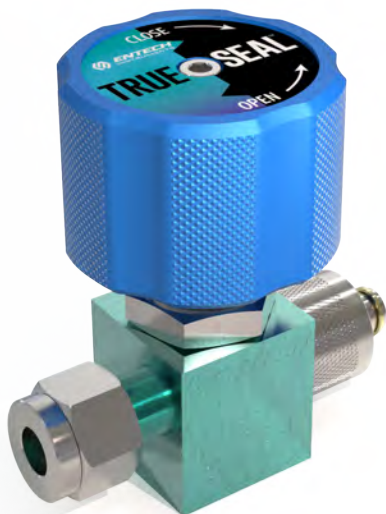
*See What's Really There*

**TrueSeal™ Valve**  
For Air & Gas Sampling



**TrueSeal™**  
For Air & Gas Sampling

***The Most Reliable & Inert Air Valve for Volatiles Sampling & Analysis***



## TrueSeal™ Features

- 3rd Generation valve offering superior performance.
- Not as susceptible to particulate induced leaks.
- Two separate seals ensure leak-tight operation.
- Repairable if very large amounts of debris were to enter the valve.
- Unique soft nickel seal is the same material used in ultra-torr and VCR fittings.
- Not subject to damage even after repeated hard tightenings.

## Entech TrueSeal™ Valve

The only double-sealing valve for added reliability.

With years of feedback from our laboratory customers and field sampling professionals, Entech has engineered a valve that not only seals with less force than any other valve on the market, but also provides a double seal for extra assurance of leak-free operation even in the most demanding conditions. To achieve these goals, the Entech TrueSeal™ valve utilizes some key design innovations and distinctions.

## The TrueSeal™ valve requires only 2 in/lbs of torque to seal!

### EasyGrip™ Knob

If you're familiar with the TO valves, you'll surely notice the new and distinctive EasyGrip™ knob design. This ergonomic knob provides for a more comfortable experience when processing hundreds of canisters in the lab or having to conduct numerous sampling events in the field. It is designed to contour the hand and provide a more relaxed feel while promoting a more gentle closure. A simple  $\frac{1}{3}$  turn is all it takes to close.



### Finger Tightened Cap

Also new on the outside, the TrueSeal™ valve comes standard with a finger tightened cap that makes a better seal than the alternative brass caps. There is also far less potential for thread damage with the elimination of wrenches. Thread damage is permanent and translates to replacement costs and time. Tool-free operation is just another way Entech protects your product investments.

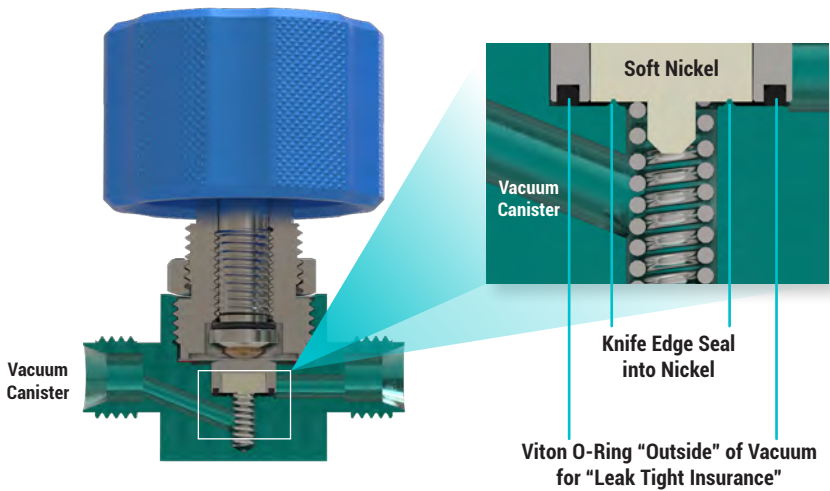
### Silonite Coating Comes Standard

All TrueSeal™ valves will now come standard with the ultra-inert Entech Silonite™ coating. Silonite™ prevents the losses of sticky or reactive compounds and provides an inert path from the point of sample introduction to collection.



A Superior Metal To Metal Seal

The primary sealing surface is a stainless steel knife-edge which cuts into a softer nickel valve stop. Because the softer nickel valve stop can yield and conform to particles, the two sealing surfaces are able to fully come together even in the event of surface contamination.



Soft Nickel Seal

O-Ring Seal



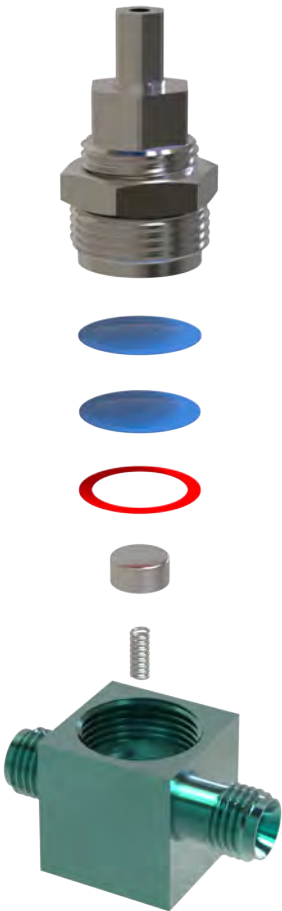
A Double Seal Provides Extra Assurance

Entech wanted to go a step further with the TrueSeal™ valve and completely eliminate any potential for leaks. To achieve this, a small O-Ring was added as a secondary seal. This O-Ring has 15x less Viton™ than the popular Bottle-Vac™, 30x less viton than both of the major flow controllers in use today, and is positioned outside of the influence of the canisters vacuum. It is therefore almost completely isolated from the sample, yet serves as added insurance should the primary mechanism become compromised.

Repairable

While the TrueSeal™ valve is designed to tolerate particles better than any other valve on the market, there are times when substantial debris accumulates from repeated operation in dirty environments. The repair kit from Entech is incredibly low cost and easy to install, returning your TrueSeal™ valve to like-new condition in just minutes.

| Description  | Unit | Part #     |
|--|------|------------|
| <b>TrueSeal™ Valve Part Numbers</b>  |      |            |
| TrueSeal™ Valve (Silonite™ Coated)   | EA   | 29-TS-01   |
| TrueSeal™ Valve with Stem (Silonite™ Coated)   | EA   | 29-TSD-01  |
| TrueSeal™ Valve with Gauge Port (Silonite™ Coated)   | EA   | 29-TSG-01  |
| Repair Kit for TrueSeal™ Valve (Includes Nickel Valve Stop & O-Ring, 2 Diaphragms, & Sealing Washer) | EA   | 29-TS-KIT1 |





**Learn more about us:**



[entechinst.com](http://entechinst.com)



[facebook.com/entechinst](https://facebook.com/entechinst)



[twitter.com/entechinst](https://twitter.com/entechinst)



[linkedin.com/company/entech-instruments-inc](https://linkedin.com/company/entech-instruments-inc)

Entech Instruments  
2207 Agate Court  
Simi Valley, CA 93065  
Phone: 805-527-5939

TrueSeal™ Valve – 190205-3.0

© 2019 Entech Instruments. Silonite™, MiniCan™, and Slab-Tight™ are trademarks of Entech Instruments. All Rights Reserved.