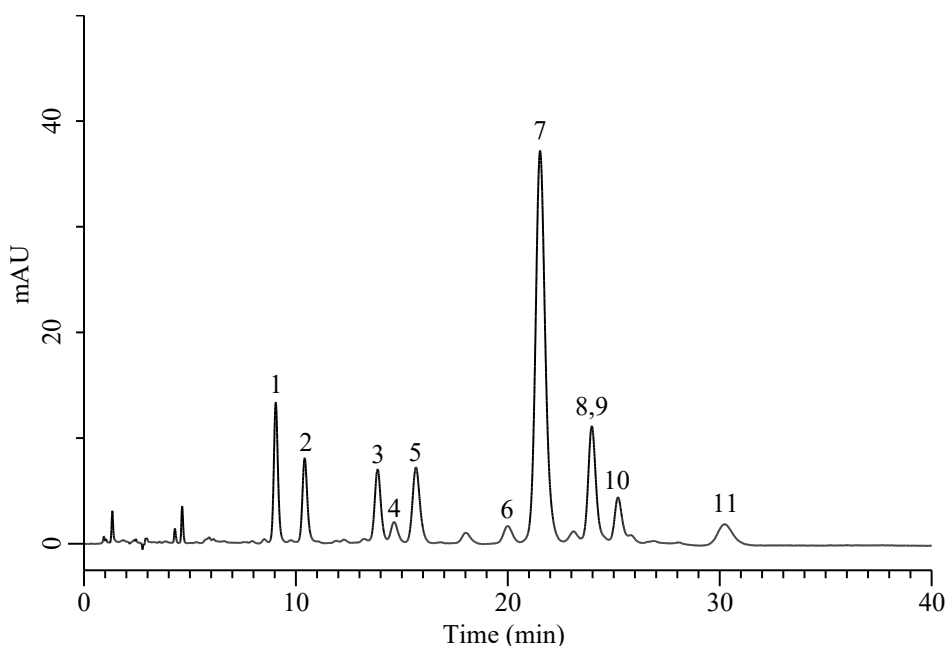


Analysis of Ivermectin

The chromatogram was provided by Valer Laboratórios, Brazil and Acore Consumíveis, Brazil.



Conditions

Column : InertSustain PFP (GL Sciences Inc.)
 (3 μ m HP, 250 x 4.6 mm I.D.)
Column Cat. No. : 5020-87934
Eluent : A) CH₃CN
 B) CH₃OH
 C) H₂O

Time (min)	A (vol%)	B (vol%)	C (vol%)
0.0	24	35	41
18.0	24	35	41
22.0	25	38	37
25.0	25	38	37
25.1	24	35	41
40.0	24	35	41

Analyte:

1. Impurity G	0.15 mg/L
2. Impurity C	0.15 mg/L
3. Impurity H	0.15 mg/L
4. Impurity 8A-Oxo-H2B1a	0.15 mg/L
5. Impurity A	0.15 mg/L
6. Impurity D	0.15 mg/L
7. Ivermectin	1.2 mg/L
8. Impurity J	0.15 mg/L
9. Impurity I	0.15 mg/L
10. Impurity K	0.15 mg/L
11. Impurity E	0.15 mg/L

Flow Rate : 1.2 mL/min
Col. Temp. : 40 °C
Detection : UV 254 nm
Injection Vol. : 10 μ L
Sample : Standard